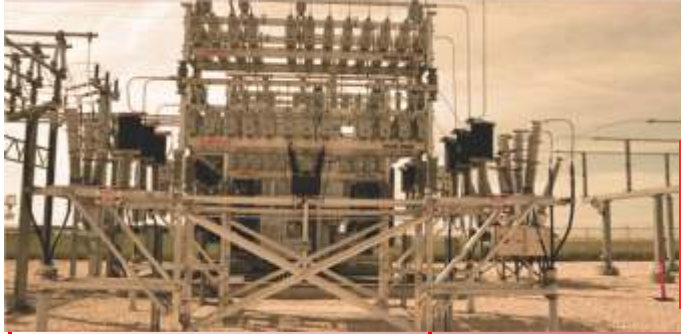




BCH New Range of LT Capacitors



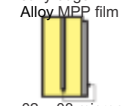
BCH ELECTRIC LIMITED



BCH New range of LT capacitors

Wide range of LT capacitors	MPP# (Metallized Polypropylene)	
		
	Cylindrical - Normal Duty	Cylindrical - Heavy Duty
Type	MPP-CN	MPP-CH
Range	1,2,3.....30 kVar	1,2,3.....30 kVar
Rated Voltage (Vn)	440V/480V/525V *	440V/480V/525V *
Insulation Voltage	3kV AC	3kV AC
Frequency	50 (+/- 3%) Hz	50 (+/- 3%) Hz
Maximum permissible over voltage	1.1 Vn	1.1 Vn
Maximum permissible over current	1.3 In	1.3 In
Rated Temperature	50° C	50° C
Dielectric	Polypropylene	Polypropylene
Total Capacitor Loss	<1 Watts / kVar	<1 Watts / kVar
Impregnation	High Viscosity Resin , Dry type	High Viscosity Resin , Dry type
Cooling	Natural Air cooled	Natural Air cooled
Protection	Pressure Disconnecter	Pressure Disconnecter
Connection	Delta	Delta
Life expectancy	2-3 Yrs	3-5 Yrs
Referring Standard	IS 13340, IEC 60831	IS 13340, IEC 60831

* Any other voltage can also be provided on request



Heavy edge Zn-Al Alloy MPP film

.02 - .03 micron metallised layer

MPP Capacitors (IS13340)

MPP capacitors are manufactured using Zn-Al metallized polypropylene film. These modules are provided with pressure interrupter arrangement for safety against bursting due to internal pressure arised due to prolonged high voltage / current. The modules are assembled in a aluminium case or CRCA container



**MPP#
(Metallized Polypropylene)**

**APP#
(All Polypropylene)**



Box - Normal Duty



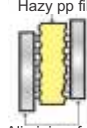
Box - Heavy Duty



MPP-BN	MPP-BH	APP-SL
5,7.5,10....25 kVar	5,7.5,10....25 kVar	1,2,3.....30 kVar
440V*	440V *	440V/480V/525V *
3kV AC	3kV AC	3kV AC
50 (+/- 3%) Hz	50 (+/- 3%) Hz	50 (+/- 3%) Hz
1.1 Vn	1.1 Vn	1.1 Vn
1.3 In	1.5 In	1.7 In
50° C	50° C	50° C
Polypropylene	Polypropylene	Single layer PP film
<1 Watts / kVar	<1 Watts / kVar	<0.5 Watts / kVar
High Viscosity Resin , Dry type	High Viscosity Resin , Dry type	Non PCB, PXE Oil
Natural Air cooled	Natural Air cooled	Oil & Air cooled
Internal fuse	Internal fuse	Internal fuse
Delta	Delta	Delta
2-3 Yrs	3-5 Yrs	7-10 Yrs
IS 13340, IEC 60831	IS 13340, IEC 60831	IS 13585, IEC 60931

Any other variety can also be provided on request

Double thick double
Hazy pp film



Aluminium foil

APP Capacitors

Non self healing APP capacitors manufactured using double hazy and double thick polypropylene films between two electrodes of thick aluminium foil have extended foil construction to ensure low watt losses

CAPACITORS

MPP Cylindrical - Normal Duty

CAT Code	Description
BCHMCN001B	1 kVar, MPP Can, 440 V, 3Ph Capacitor
BCHMCN002B	2 kVar, MPP Can, 440 V, 3Ph Capacitor
BCHMCN003B	3 kVar, MPP Can, 440 V, 3Ph Capacitor
BCHMCN004B	4 kVar, MPP Can, 440 V, 3Ph Capacitor
BCHMCN005B	5 kVar, MPP Can, 440 V, 3Ph Capacitor
BCHMCN007B	7.5 kVar, MPP Can, 440 V, 3Ph Capacitor
BCHMCN009B	9 kVar, MPP Can, 440 V, 3Ph Capacitor
BCHMCN010B	10 kVar, MPP Can, 440 V, 3Ph Capacitor
BCHMCN012B	12.5 kVar, MPP Can, 440 V, 3Ph Capacitor
BCHMCN015B	15 kVar, MPP Can, 440 V, 3Ph Capacitor
BCHMCN020B	20 kVar, MPP Can, 440 V, 3Ph Capacitor
BCHMCN025B	25 kVar, MPP Can, 440 V, 3Ph Capacitor
BCHMCN030B	30 kVar, MPP Can, 440 V, 3Ph Capacitor

MPP Cylindrical - Heavy Duty

CAT Code	Description
BCHMCH001B	1 kVar, MPP Can, 440 V, 3Ph Capacitor
BCHMCH002B	2 kVar, MPP Can, 440 V, 3Ph Capacitor
BCHMCH003B	3 kVar, MPP Can, 440 V, 3Ph Capacitor
BCHMCH004B	4 kVar, MPP Can, 440 V, 3Ph Capacitor
BCHMCH005B	5 kVar, MPP Can, 440 V, 3Ph Capacitor
BCHMCH007B	7.5 kVar, MPP Can, 440 V, 3Ph Capacitor
BCHMCH009B	9 kVar, MPP Can, 440 V, 3Ph Capacitor
BCHMCH010B	10 kVar, MPP Can, 440 V, 3Ph Capacitor
BCHMCH012B	12.5 kVar, MPP Can, 440 V, 3Ph Capacitor
BCHMCH015B	15 kVar, MPP Can, 440 V, 3Ph Capacitor
BCHMCH020B	20 kVar, MPP Can, 440 V, 3Ph Capacitor
BCHMCH025B	25 kVar, MPP Can, 440 V, 3Ph Capacitor
BCHMCH030B	30 kVar, MPP Can, 440 V, 3Ph Capacitor
BCHMCH011C	11.2 kVar, MPP Can, 480 V, 3Ph Capacitor
BCHMCH012C	12.4 kVar, MPP Can, 480 V, 3Ph Capacitor
BCHMCH014C	14 kVar, MPP Can, 480 V, 3Ph Capacitor
BCHMCH016C	16.8 kVar, MPP Can, 480 V, 3Ph Capacitor
BCHMCH018C	18.6 kVar, MPP Can, 480 V, 3Ph Capacitor
BCHMCH022C	22.4 kVar, MPP Can, 480 V, 3Ph Capacitor
BCHMCH024C	24.8 kVar, MPP Can, 480 V, 3Ph Capacitor
BCHMCH028C	28.1 kVar, MPP Can, 480 V, 3Ph Capacitor
BCHMCH006D	6.6 kVar, MPP Can, 525 V, 3Ph Capacitor
BCHMCH007D	7.5 kVar, MPP Can, 525 V, 3Ph Capacitor
BCHMCH011D	11.2 kVar, MPP Can, 525 V, 3Ph Capacitor
BCHMCH013D	13.8 kVar, MPP Can, 525 V, 3Ph Capacitor
BCHMCH019D	19.8 kVar, MPP Can, 525 V, 3Ph Capacitor
BCHMCH020D	20 kVar, MPP Can, 525 V, 3Ph Capacitor
BCHMCH025D	25 kVar, MPP Can, 525 V, 3Ph Capacitor
BCHMCH030D	30 kVar, MPP Can, 525 V, 3Ph Capacitor
BCHMCH033D	33.1 kVar, MPP Can, 525 V, 3Ph Capacitor

MPP Box - Normal Duty

CAT Code	Description
BCHMBN005B	5 kVar, MPP Box, 440 V, 3Ph Capacitor
BCHMBN007B	7.5 kVar, MPP Box, 440 V, 3Ph Capacitor
BCHMBN010B	10 kVar, MPP Box, 440 V, 3Ph Capacitor
BCHMBN012B	12.5 kVar, MPP Box, 440 V, 3Ph Capacitor
BCHMBN015B	15 kVar, MPP Box, 440 V, 3Ph Capacitor
BCHMBN020B	20 kVar, MPP Box, 440 V, 3Ph Capacitor
BCHMBN025B	25 kVar, MPP Box, 440 V, 3Ph Capacitor

APP Box - Single layer

CAT Code	Description
BCHAPS001B	1 kVar, APP Box, 440 V, 3Ph Capacitor
BCHAPS002B	2 kVar, APP Box, 440 V, 3Ph Capacitor
BCHAPS003B	3 kVar, APP Box, 440 V, 3Ph Capacitor
BCHAPS004B	4 kVar, APP Box, 440 V, 3Ph Capacitor
BCHAPS005B	5 kVar, APP Box, 440 V, 3Ph Capacitor
BCHAPS007B	7.5 kVar, APP Box, 440 V, 3Ph Capacitor
BCHAPS009B	9 kVar, APP Box, 440 V, 3Ph Capacitor
BCHAPS010B	10 kVar, APP Box, 440 V, 3Ph Capacitor
BCHAPS012B	12.5 kVar, APP Box, 440 V, 3Ph Capacitor
BCHAPS015B	15 kVar, APP Box, 440 V, 3Ph Capacitor
BCHAPS020B	20 kVar, APP Box, 440 V, 3Ph Capacitor
BCHAPS025B	25 kVar, APP Box, 440 V, 3Ph Capacitor
BCHAPS030B	30 kVar, APP Box, 440 V, 3Ph Capacitor
BCHAPS005C	5.6 kVar, APP Box, 480 V, 3Ph Capacitor
BCHAPS006C	6.7 kVar, APP Box, 480 V, 3Ph Capacitor
BCHAPS011C	11.3 kVar, APP Box, 480 V, 3Ph Capacitor
BCHAPS012C	12.5 kVar, APP Box, 480 V, 3Ph Capacitor
BCHAPS014C	14.4 kVar, APP Box, 480 V, 3Ph Capacitor
BCHAPS015C	15.5 kVar, APP Box, 480 V, 3Ph Capacitor
BCHAPS017C	17 kVar, APP Box, 480 V, 3Ph Capacitor
BCHAPS019C	19 kVar, APP Box, 480 V, 3Ph Capacitor
BCHAPS022C	22.4 kVar, APP Box, 480 V, 3Ph Capacitor
BCHAPS025C	25 kVar, APP Box, 480 V, 3Ph Capacitor
BCHAPS028C	28.1 kVar, APP Box, 480 V, 3Ph Capacitor
BCHAPS031C	31.5 kVar, APP Box, 480 V, 3Ph Capacitor
BCHAPS033C	33.9 kVar, APP Box, 480 V, 3Ph Capacitor
BCHAPS006D	6.9 kVar, APP Box, 525 V, 3Ph Capacitor
BCHAPS009D	9.2 kVar, APP Box, 525 V, 3Ph Capacitor
BCHAPS012D	12.5 kVar, APP Box, 525 V, 3Ph Capacitor
BCHAPS013D	13.8 kVar, APP Box, 525 V, 3Ph Capacitor
BCHAPS015D	15.4 kVar, APP Box, 525 V, 3Ph Capacitor
BCHAPS017D	17.2 kVar, APP Box, 525 V, 3Ph Capacitor
BCHAPS018D	18.5 kVar, APP Box, 525 V, 3Ph Capacitor
BCHAPS020D	20.6 kVar, APP Box, 525 V, 3Ph Capacitor
BCHAPS022D	22.6 kVar, APP Box, 525 V, 3Ph Capacitor
BCHAPS025D	25 kVar, APP Box, 525 V, 3Ph Capacitor
BCHAPS027D	27.5 kVar, APP Box, 525 V, 3Ph Capacitor
BCHAPS030D	30.6 kVar, APP Box, 525 V, 3Ph Capacitor
BCHAPS033D	33.1 kVar, APP Box, 525 V, 3Ph Capacitor
BCHAPS037D	37.5 kVar, APP Box, 525 V, 3Ph Capacitor

MPP Box - Heavy Duty

CAT Code	Description
BCHMBH005B	5 kVar, MPP Box, 440 V, 3Ph Capacitor
BCHMBH007B	7.5 kVar, MPP Box, 440 V, 3Ph Capacitor
BCHMBH010B	10 kVar, MPP Box, 440 V, 3Ph Capacitor
BCHMBH012B	12.5 kVar, MPP Box, 440 V, 3Ph Capacitor
BCHMBH015B	15 kVar, MPP Box, 440 V, 3Ph Capacitor
BCHMBH020B	20 kVar, MPP Box, 440 V, 3Ph Capacitor
BCHMBH025B	25 kVar, MPP Box, 440 V, 3Ph Capacitor

Initial power factor	Required power factor																		Unit
	0.8	0.85	0.9	0.91	0.92	0.93	0.94	0.95	0.96	0.97	0.98	0.99							
0.4	1.537	1.668	1.805	1.832	1.861	1.895	1.924	1.959	1.998	2.037	2.085	2.146							2.288
0.5	0.982	1.112	1.248	1.276	1.303	1.337	1.369	1.403	1.441	1.481	1.529	1.59							1.732
0.6	0.584	0.714	0.849	0.878	0.905	0.939	0.971	1.005	1.043	1.083	1.131	1.192							1.334
0.61	0.549	0.679	0.815	0.843	0.879	0.904	0.936	0.97	1.008	1.048	1.096	1.157							1.299
0.62	0.515	0.645	0.781	0.809	0.836	0.87	0.902	0.936	0.974	1.014	1.062	1.123							1.265
0.63	0.483	0.613	0.749	0.777	0.804	0.838	0.87	0.904	0.942	0.982	1.03	1.091							1.233
0.64	0.45	0.58	0.716	0.744	0.771	0.805	0.744	0.837	0.871	0.909	0.957	1.058							1.2
0.65	0.419	0.549	0.685	0.713	0.74	0.774	0.806	0.84	0.878	0.918	0.966	1.027							1.169
0.66	0.388	0.518	0.654	0.682	0.709	0.743	0.775	0.809	0.847	0.887	0.935	0.996							1.138
0.67	0.358	0.488	0.624	0.652	0.679	0.713	0.745	0.779	0.817	0.857	0.905	0.966							1.108
0.68	0.329	0.452	0.595	0.623	0.65	0.684	0.716	0.75	0.788	0.828	0.876	0.937							1.079
0.69	0.299	0.429	0.565	0.593	0.62	0.654	0.686	0.72	0.758	0.798	0.84	0.907							1.049
0.7	0.27	0.4	0.536	0.564	0.591	0.625	0.657	0.691	0.729	0.769	0.811	0.878							1.02
0.71	0.242	0.372	0.508	0.536	0.563	0.597	0.629	0.663	0.701	0.741	0.783	0.88							0.992
0.72	0.213	0.343	0.479	0.507	0.534	0.568	0.6	0.634	0.672	0.712	0.754	0.821							0.963
0.73	0.186	0.316	0.452	0.48	0.507	0.541	0.573	0.607	0.645	0.685	0.727	0.794							0.936
0.74	0.159	0.289	0.425	0.453	0.48	0.514	0.546	0.58	0.618	0.658	0.7	0.767							0.909
0.75	0.132	0.262	0.398	0.426	0.451	0.487	0.519	0.553	0.591	0.631	0.673	0.74							0.888
0.76	0.105	0.235	0.371	0.399	0.426	0.46	0.492	0.526	0.564	0.604	0.652	0.713							0.855
0.77	0.079	0.209	0.345	0.372	0.4	0.434	0.466	0.5	0.538	0.573	0.62	0.787							0.829
0.78	0.053	0.183	0.319	0.342	0.374	0.404	0.44	0.474	0.512	0.552	0.594	0.661							0.803
0.79	0.026	0.146	0.292	0.32	0.347	0.381	0.413	0.447	0.485	0.525	0.567	0.634							0.776
0.8		0.13	0.266	0.294	0.321	0.355	0.387	0.421	0.459	0.499	0.541	0.608							0.75
0.81		0.104	0.24	0.268	0.295	0.329	0.361	0.395	0.433	0.473	0.515	0.582							0.724
0.82		0.078	0.214	0.242	0.269	0.303	0.335	0.369	0.407	0.447	0.489	0.556							0.698
0.83		0.052	0.188	0.216	0.243	0.277	0.309	0.343	0.381	0.421	0.463	0.53							0.672
0.84		0.026	0.162	0.19	0.217	0.251	0.283	0.317	0.355	0.395	0.437	0.504							0.645
0.85			0.136	0.164	0.191	0.225	0.257	0.291	0.329	0.369	0.417	0.478							0.62
0.86			0.109	0.14	0.167	0.198	0.23	0.264	0.301	0.343	0.39	0.45							0.593
0.87			0.083	0.114	0.141	0.172	0.204	0.238	0.275	0.317	0.364	0.424							0.567
0.88			0.054	0.085	0.112	0.143	0.175	0.209	0.246	0.288	0.335	0.395							0.538
0.89			0.028	0.058	0.086	0.117	0.149	0.183	0.22	0.262	0.309	0.369							0.512
0.9				0.031	0.058	0.089	0.129	0.155	0.192	0.234	0.281	0.341							0.484
0.91					0.027	0.058	0.09	0.124	0.161	0.203	0.25	0.31							0.453
0.92						0.031	0.063	0.097	0.134	0.176	0.223	0.283							0.426
0.93							0.032	0.066	0.103	0.145	0.192	0.252							0.395
0.94								0.034	0.071	0.113	0.16	0.22							0.363
0.95									0.037	0.079	0.126	0.186							0.329
0.96										0.042	0.089	0.149							0.292
0.97											0.047	0.107							0.25
0.98																			
0.99																			

Example	Load : 500kW	Initial power factor : 0.8 to be improved to 0.97	Factor from table : 0.499
	Capacitance required = $500 \times 0.499 = 249.5 \sim 250 \text{ kVar}$ (Capacitor bank)		

Power Control Products

Starters & Submersible Pump Starters

Industrial Enclosures

Industrial Products

Wires & Cables

Motor Control Products

Customised Solution

Automation

a strong commitment to serve better always ...



BCH ELECTRIC LIMITED

Visit us at : www.bchindia.com

Corporate Office : 1105, New Delhi House, 27, Barakhamba Road, New Delhi-110 001 Tel. : 91-11-23316029/3610/6539/43673100 Fax : 91-11-23715247

CIN : U31103WB1965PLC026427, Customercare No. 1800-103-9262, E-mail : marketing@bchindia.com

Registered Office : Block 1E, 216, Acharya Jagadish Chandra Bose Road, Kolkata - 700 017

Works 1 : 20/4, Mathura Road, Faridabad - 121 006 (Haryana) Tel. : 0129-4063000/4293000 Fax : 0129-2304016

Works 2 : 64-68, Sector-7, IIE, Pant Nagar, Rudrapur, Udham Singh Nagar - 263 153 (Uttarakhand) Tel. : 05944-250214/16 Fax : 05944-250215

Sales Offices :

Ahmedabad

93, City Centre,
Near Swastik Char Rasta,
C.G. Road, Navrangpura,
Ahmedabad- 380 009
Tel. : 079-26565719/40074482
Fax : 079-26565719
E-mail : ahmedabad@bchindia.com

Bangalore

B.M.H. Complex, 2nd Floor,
No. 22, Kengal Hanumanthiah Road,
Bangalore - 560 027
Tel. : 080-22273478/41144878/41144879
Tel. : 080-22236759
E-mail : bangalore@bchindia.com

Chandigarh

SCO 121-22-23, 1st Floor,
Sector 34-A, Chandigarh - 160 022
Tel. : 0172-5078957/2666122
Fax : 0172-5049905
E-mail : chandigarh@bchindia.com

Chennai

Flat No. 3A, 3rd Floor,
Sree Apartments,
No.508, TTK Road,
Alwarpet, Chennai 600 018
Tel. : 044-24337046, 24337047
Fax : 044-24337047
E-mail : chennai@bchindia.com

Coimbatore

87, Dr. Nanjappa Road,
Coimbatore - 641 018
Tel. : 0422-2305311
Fax : 0422-2302599
E-mail : coimbatore@bchindia.com

Faridabad

20/4, Mathura Road,
Faridabad - 121 006 (Haryana)
Tel. : 0129-2304016
E-mail : faridabad@bchindia.com

Hyderabad

1-8-303/48/13/102, Arya One,
2nd Floor, P. G. Road,
Secunderabad - 500 003
Tel. : 040-66206263/27890306
Fax : 040-66207273
E-mail : hyderabad@bchindia.com

Indore

330-331, Indraprastha Tower,
3rd Floor, 6, M.G. Road,
Indore - 452 001
Tel. : 0731-2510011
Tel. : 0731-2510012
E-mail : indore@bchindia.com

Jaipur

25, Hathrol, Gopalbari,
Jaipur - 302 001
Tel. : 0141-5104521
Tel. : 0141-2363521
Fax : 0141-2363521
E-mail : jaipur@bchindia.com

Jamshedpur

3rd Floor, Aastha Trade Centre,
'Q' Road, Bistupur,
Jamshedpur - 831 001
Tel. : 0657-2321097/2321481
E-mail : jamshedpur@bchindia.com

Kolkata

Block 1E, 216,
Acharya Jagadish Chandra Bose Road,
Kolkata - 700 017
Tel. : 033-22871728
E-mail : kolkata@bchindia.com

Lucknow

Madan Plaza, 3rd Floor,
14, Station Road,
Lucknow - 226 001
Tel. : 0522-4025597/4025997
Fax : 0522-4025697
E-mail : lucknow@bchindia.com

Ludhiana

S.C.O. - 18, 2nd Floor,
Feroze Gandhi Market,
Ludhiana - 140 001
Tel. : 0161-5021807/5022808
Fax : 0161-5021807
E-mail : ludhiana@bchindia.com

Mumbai

A-151, Mittal Tower,
Nariman Point,
Mumbai - 400 021
Tel. : 022-22822947/22850162
Tel. : 022-22822858
E-mail : mumbai@bchindia.com

New Delhi

801, Akash Deep Building,
26A, Barakhamba Road,
New Delhi - 110 001
Tel. : 011-23313878/66307065
Tel. : 011-23739230
E-mail : delhi@bchindia.com

Pune

8, Sarosh Bhavan,
16-B/1, Dr. Ambedkar Road,
Pune - 411 001
Tel. : 020-26052590
Tel. : 020-26135224
E-mail : pune@bchindia.com

Raipur

2nd Floor, Building No. B-234,
Indira Gandhi Vyasayik Parisar,
Pandri, Raipur - 492 004
Tel. : 0771-4020213
Tel. : 0771-2582680
E-mail : raipur@bchindia.com

Trichy

Kingstone Park, 2nd Floor,
19/1, Puthur High Road,
Ramalinga Nagar,
Trichy - 620 017
Tel. : 0431-4040497
E-mail : trichy@bchindia.com

Vadodara

301, Third Floor, "Florence Classic",
10, Ashapuri Co-Op. Hsg. Soc. Ltd., Opp. VUDA Housing,
Near Cow Circle, Akola, Vadodara - 390 020
Tel. : +91-265-6548444/2345068/2345069
Telefax : 0265-2345068
E-mail : vadodara@bchindia.com

Other Branch Locations

Bhubaneswar : bhubaneswar@bchindia.com, **Cochin :** cochin@bchindia.com, **Dehradun :** dehradun@bchindia.com, **Gurgaon :** gurgaon@bchindia.com, **Guwahati :** guwahati@bchindia.com,
Hospet : hospet@bchindia.com, **Hubli :** hubli@bchindia.com, **Madurai :** madurai@bchindia.com, **Vishakapatnam :** vizag@bchindia.com, **Nagpur :** nagpur@bchindia.com **Surat :** surat@bchindia.com

Resident Engineer Locations

Baddi	Gurgaon	Madurai	Rajahmundry
Bardhaman	Haridwar	Muzaffarnagar	Salem
Bhilai	Hubli	Nagpur	Surat
Bhubaneswar	Hospet	Nashik	Udaipur
Cochin	Jodhpur	Patna	Vapi
Dehradun	Kakinada	Puducherry	Vishakhapatnam
Durgapur	Kota	Rajkot	Warangal

Since product improvement is a continuous process, the data furnished in this brochure may undergo revision without prior notice.